

What's New

Recalls

Stork Craft Cribs

On November 23, 2009, the U.S. Consumer Product Safety Commission (CPSC), in cooperation with Stork Craft Manufacturing Inc., announced the voluntary recall of more than 2.1 million Stork Craft drop-side cribs, including Stork Craft drop-side cribs with the Fisher-Price logo. CPSC urges parents and caregivers to immediately stop using the recalled cribs and wait for the free repair kit. They should not attempt to fix the cribs without the kit, and they should find an alternative, safe sleeping environment for babies until cribs are repaired.

Consumers are asked to contact Stork Craft toll-free at (877) 274-0277 to order the free repair kit, or log on to www.storkcraft.com. The repair kit converts the drop-side on these cribs to a fixed side. This recall does not involve cribs that do not have a drop-side or cribs with metal rod drop-side hardware. It involves only those cribs with plastic trigger and one-hand-system drop-side hardware.

This recall includes Stork Craft cribs manufactured and distributed between January 1993 and October 2009, and it includes Stork Craft cribs with the Fisher-Price logo manufactured between October 1997 and December 2004. The Stork Craft cribs with the Fisher-Price logo were first sold in the U.S. in July 1998.

The manufacture date, model number, crib name, country of origin, and the firm's name, address, and contact information are located on the assembly instruction sheet attached to the mattress support board. The firm's insignia "storkcraft

baby" or "storkling" is inscribed on the drop-side teething rail of some cribs. In Stork Craft cribs that contain the "Fisher-Price" logo, this logo can be found on the crib's teething rail, in the manufacturer's instructions, on the assembly instruction sheet attached to the mattress support board, and on the end panels of the Twinkle-Twinkle and Crystal crib models.

Major retailers that sold the recalled cribs include BJ's Wholesale Club, J.C. Penney, Kmart, Meijer, Sears, USA Baby, and Wal-Mart stores and online at Amazon.com, Babiesrus.com, Costco.com, Target.com, and Walmart.com from January 1993 through October 2009 at a cost between \$100 and \$400.

Graco Strollers

About 1.5 million Graco strollers are being recalled after some children's fingertips were amputated by hinges on the products. The recall by Graco Children's Products Inc. includes certain model numbers of its Passage, Alano and Spree Strollers and Travel Systems. The strollers were made in China by Graco and sold at AAFES, Burlington Coat Factory, Babies R Us, Toys R Us, Kmart, Fred Meyer, Meijer, Navy Exchange, Sears, Target, Wal-Mart and other retailers nationwide from October 2004 to December 2009. The model numbers and manufacture dates are on the lower inside portion of the rear frame, just above the rear wheels. The Consumer Product Safety Commission advised consumers to stop using the strollers and contact Graco to receive a free repair kit.

**Child Care Licensing
issued 431 new permits
(Licenses, Registrations,
and Approvals) in 2009.**

Dorel Asia Cribs

The death of a six-month old child prompted the recall Tuesday of about 635,000 cribs sold by Kmart, Sears, Wal-Mart and other stores. The Consumer Product Safety Commission announced the recall of 20 models of Dorel Asia cribs with both drop sides and fixed front rails. Some of the Chinese- and Vietnamese-made cribs were recalled because their drop sides can detach, creating a space where a child can be trapped and suffocate or strangle. Some of the cribs were also recalled because a child can be trapped if one of the slats is broken or damaged. This damage can occur while the crib is in use as well as when it is being put together, taken apart or shipped.

Live Scan

Beginning January 1, 2010, child care providers **must** use their "CC" number when making Live Scan fingerprint appointments. The number will not be accepted if it does not include the "CC" in front of it. Providers should not use license number as this will delay the processing of prints.

Also, child care workers who walk-in to get fingerprinted instead of making an appointment **must** have a copy of the Live Scan SAFE form with them that includes the facility's name and the "CC" number on it. SAFE Forms can be obtained from the Licensing Regional Offices. Contact information for the Regional Offices is listed on the last page of this newsletter. (Reminder: walk-ins should only be used in an emergency situation.)

Live Scan "CC" numbers were mailed to all child care providers in June 2008 and again in December 2009. If you have misplaced your number, please call you Licensing Regional Office.

Regulatory Fees

Regulatory fees for approximately 2900 providers were due on January 30, 2010. Fees are due every two years. Providers that paid a fee in 2009 do not owe one this year. Please send a check or money order only (no cash, please). Please return you're the Fee Form that you received in the mail with the payment as well.

Fee notices were mailed in December. **If you did not receive a fee notice and think you owe a fee please call 800-556-7445 to find out before you mail the fee.** Providers should mail their unpaid fees to the following address:

DSS Child Care Licensing
2638 Two Notch Road, Suite 200
Columbia, SC 29204

The fee notice was mailed with information about the crib recall and the Live Scan polices described on

the previous page. Please make sure you read all of the information included in the mailing.

Advisory Committee

The State Advisory Committee on the Regulation of Child Care Facilities met on December 2, 2009 and January 20, 2010. The board has nine new members. The first session with the new members in December was an introductory and organizational meeting. At the January meeting, the committee set their meeting dates and decided on which areas of the regulations to focus their work for the upcoming year.



SC Child Care Licensing Staff Is Nationally Certified

All SCDSS Child Care Licensing Specialists and Supervisors as well Program Staff from the Central Office are now nationally certified regulators. The National Association of Regulatory Administrators (NARA) conducted training sessions in Columbia from November 3-6, 2009 and January 12-14, 2010. Staff members received training on a variety of regulatory topics including the different phases of child care licensing, legal issues in child care, managing complaints, and provider support services. Trainers came from Pennsylvania, Wisconsin, and Oklahoma to share their expertise with the Licensing staff.

South Carolina is one of the first states in the nation to have its entire Child Care Licensing staff certified by NARA.

DHEC Investigating Upswing in Norovirus Cases Statewide

COLUMBIA, S.C. - Since early January the S.C. Department of Health and Environmental Control has been investigating more than twice the usual number of diarrheal outbreaks reported across the state, the agency announced today.

"These illnesses have occurred in a wide variety of institutional settings including schools, nursing homes and assisted living facilities," said Jerry Gibson, M.D., state epidemiologist and director of DHEC's Bureau of Disease Control. "Most of the illnesses have been caused by Norovirus and this significant increase is similar to what is occurring across the nation."

Dr. Gibson said symptoms of Norovirus include nausea, vomiting, diarrhea and stomach cramping. Sometimes symptoms can include a low-grade fever, chills, headache, muscle aches and a general sense of tiredness. Most people show symptoms within 48 hours of exposure to Norovirus, with the illness typically lasting one to two days.

"Norovirus is very infectious and easily spreads from person to person, shedding might continue for two weeks after recovery," Dr. Gibson said. "Frequent hand washing with soap and warm water is the most effective way to stop transmission of illness from person to person. Commonly handled surfaces such as bathroom sink hardware, door knobs and handrails can become contaminated by the unwashed hands of an ill person and further spread the illness. However, effective cleaning measures can easily stop the transmission of disease."

Dr. Gibson said cleaning guidelines for institutions experiencing a diarrheal outbreak have been posted on DHEC's Web site at: <http://www.scdhec.gov/health/licen/GuideGastroVirus.pdf>.

"We've increased our surveillance efforts across the state and we're working with schools, nursing homes, assisted living facilities and other partner organizations and institutional settings to create aware-

ness about Norovirus and what you can do to control transmission," Dr. Gibson said.

According to Dr. Gibson, anyone experiencing diarrhea is encouraged to stay home from work or school and wash their hands often to reduce the spread of disease. Most cases of Norovirus will resolve without medical treatment but individuals are encouraged to contact their private medical provider if symptoms persist. The public can also inform DHEC about outbreaks by calling their local DHEC public health department.



Regulation Corner

CCL New & Notes is unveiling a new feature. The "Regulation Corner" article will focus on one regulatory topic each issue to clarify some questions associated with regulations that apply to that topic. This month's article is on criminal background checks.

Regulation 114-503 K(2)(a) states, "To be employed by or to provide teacher/caregiver services at a child care facility, a person shall first undergo a State fingerprint review from the State Law Enforcement Division (SLED)."

The issue we occasionally run into is background checks for people who are not classified as caregivers or other child care staff. Most of these people fall into two groups – volunteers and professionals who provide support services. Providers may certainly require a criminal background check for these people as part of their policy; however, it is not a DSS Regulation.

A volunteer is someone at least 16 years of age who infrequently assists with the daily activities for children in a child care facility. A volunteer works without pay and is supervised by staff at all times when providing direct care to children. A volunteer is not required to undergo a fingerprint background check or health screening and cannot be counted in staff:child ratios. The definition of a volunteer can be found in **Regulation 114-501 A(37)**.

Professional support services personnel are people like therapists, early interventionists, tutors, art instructors, etc. who come from outside the facility to provide a service. These individuals are not directly employed by the child care facility, and there is not a DSS regulation that requires them to have a background check. Qualified child care staff members must be present at all times when on-site services are provided by these individuals.

To summarize, anyone who is not in the facility on a regular basis, does not get paid by the facility, and is never left alone with children does not need a background check. Two

key points to remember are that someone without a background check:

- **cannot** be counted in staff:child ratios
- **must** be supervised by a qualified caregiver at all times.

Even though everyone who comes into a facility does not need a background check, providers should still be aware of who they allow in the facility. **Regulation 114-503 K(2)(c)** states that child care facilities cannot employ, engage the services of or knowingly allow a person in the facility who is on the Sex Offender Registry or who has committed a crime defined in the S.C. Code of Laws as an Offense against the Person, an Offense Against Morality and Decency, or Contributing to the Delinquency of a Minor.

News Release from State Fire Marshal

(January 4, 2010)

The 2009 year came to an end with a reported 79 fire-related fatalities, an increase of four fatalities from 2008. The leading causes of fire fatalities continue to be heating, cooking, and smoking-related. 12 multiple-fatality fires were responsible for 29 deaths. All but 13 of the reported fatalities occurred in residential occupancies.

"Extreme cold weather and power outages cause a higher fire threat due to the increased use of heating sources, such as electrical space heaters, fireplaces and wood stoves," State Fire Marshal John Reich said.

According to the Fire Marshal's Office, heating-related fires are often caused by:

- **Leaving portable or space heaters unattended;**
- Fueling errors involving liquid or gas-fueled heaters
- Flaws in design, installation or use of heating equipment;
- **Placing things that can burn too close to space and portable heaters, and;**
- Lack of regular cleaning of chimneys and wood stoves.

"Keep warm, but also keep safe by paying attention to a few safety precautions while using heating systems," Reich said.

Wood Stoves and Heaters

Wood stoves and other wood-burning devices are popular heating systems. Before investing in one for your home, think as much about safety as about ease of use, efficiency and appearance. Have your stove installed by a professional. Keep a tight-fitting screen or glass doors in front of the stove or fireplace at all times. Special retaining screens can keep children and pets away from wood stoves and prevent burns. Dispose of ashes in metal containers, never in paper bags, cardboard boxes or plastic wastebaskets. Wet ashes down to cool them thoroughly. Ashes can retain enough heat to cause a fire for several days, so take no chances. Although these tips should help prevent a fire, know the signs of danger. A loud roar, sucking sounds and shaking pipes mean trouble and danger. If you hear these sounds, get everyone out of the house. Quickly shut off the fire's air supply by closing any air intake vents in the firebox. Close the damper. Call the fire department from a nearby phone.

General Heating Tips

Keep any heater at least three feet away from anything that might burn such as curtains, walls, furniture, papers, etc. To avoid injury and other mishaps, keep children and pets away from heaters. Always remember, don't try to get a small device to do a big job.

"Now is a great time to make sure your smoke alarms are in working order and to review your home escape plan so in the event of a fire, everyone in your household knows how to get out quickly and safely. For added safety, many people are considering the installation of economical residential fire sprinkler systems, which actually stop the spread of fire, protecting lives and property," Reich said.

Note from Child Care Licensing: Portable electric heaters and kerosene heaters are prohibited in child care facilities.

Reducing the Risk of SIDS in Child Care

The American Academy of Pediatrics (AAP) Healthy Child Care America is pleased to announce the release of a new online module on *Reducing the Risk of Sudden Infant Death Syndrome (SIDS) in Child Care*. Based on the AAP Reducing the Risk of SIDS in Child Care Speakers Kit, this **FREE** course is designed to educate everyone who cares for babies, including child care providers, health care professionals, parents, grandparents, and relatives.

In 1 hour, participants will learn how to create a safe sleep environment to reduce the risk of SIDS and other sleep related deaths. With an easy to use format, this course is available 24/7 from your home or office computer. Child care providers will receive a certificate of completion for one(1) contact hour. Health care professionals can also receive credit.

For instructions on how to access this **FREE** course, visit the web at www.healthychildcare.org/pdf/SIDSmoduleflyer.pdf. For more information and materials on how to reduce the risk of SIDS, visit www.healthychildcare.org/sids.html.

The Reducing the Risk of SIDS in Child Care online module is supported by Grant No. U46MC04436 from the US Department of Health and Human Services, Child Care Bureau and the Health Resources and Services Administration, Maternal and Child Health Bureau, to the AAP.

New Website Launches

HealthyChildren.org is a new website backed by 60,000 pediatricians who are members of the American Academy of Pediatrics. This new website is divided into multiple, user-friendly sections, including:

- Ages & Stages: Information on the health issues of infants through adolescents, including interactive content on developmental milestones.

- Healthy Living: Up-to-date guidance on fitness, sports, oral health, emotional wellness and nutrition.
- Safety & Prevention: Preparing for health scenarios that occur at home, school and on the go, as well as information on immunizations.
- Health Issues: An exhaustive, A-to-Z list of more than 300 health care topics.

Go to www.HealthyChildren.org to find out more.

Family Violence Training

The USC Center for Child and Family Studies offers a **free one-day** training session designed to prepare child care workers to recognize and respond appropriately to children and their families who may be experiencing domestic violence.

Participants will earn five clock hours of training in Professional Development. DSS policy stipulates that participants who miss more than 10 minutes of a session are not eligible to receive credit for that session.

Pre-registration is required. Training is limited to 30 participants and no one will be admitted without prior approval. Only one participant is allowed from each center. Please register by fax at (803) 777-9409 or by phone at (803) 777-3800 no later than 10 days before the session you want to attend. You will receive confirmation of your registration within 48 hours. Meals are on your own.

The training dates and sites for the next five sessions are listed below.

- March 13, 2010 - Columbia
- March 15, 2010 - Florence
- April 24, 2010 - Greenville
- May 27, 2010 - Columbia
- June 17, 2010 - Beaufort

More information on these sessions is available on the SCDSS Child Care Services website at: <http://childcare.sc.gov/main/updates/index.aspx>

Staff Spotlight: Jo Ann Moon



Jo Ann Moon is our spotlight staff member for this issue of CCL News and Notes. Jo Ann is a Licensing Specialist

in Region I. She has been with Child Care Licensing for 9 ½ years, and current caseload consists of facilities in Greenville and Spartanburg Counties. Previously, she was the specialist for facilities in Cherokee, Union and York Counties.

Jo Ann has worked in child care since 1973. Prior to her job as a Specialist, she was a classroom teacher in a private child care center and the director of a military child care facility. She came to SCDSS Child Care Licensing to share her expertise with other teachers and to help them enhance the learning environment for children.

Jo Ann is the mother of four children and describes herself and her family as “down to earth people.” She enjoys cooking and gardening when she’s away from work.

Jo Ann’s goal as a Licensing Specialist is to make sure children receive quality care in an educational environment. Jo Ann has a Bachelor of Science in Counseling Education from S.C. State University. She has also completed educational hours toward graduate work at Central Texas University.

Quarterly Quote

“Children will not remember you for the material things you provided but for the feeling that you cherished them.”

- Richard L. Evans

DSS Emergency Communications Room

During an emergency or disaster, child care providers should call:

800-556-7445

to report damage or closure or to request expanded capacity.

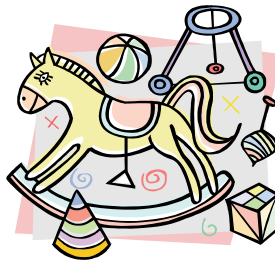
E-Newsletter

If you are reading this newsletter on the Child Care Services website and would like to receive it by e-mail, please contact us at richard.knight@dss.sc.gov.

We continue to receive good response from providers who want to receive the e-mail version, and we will add providers to our distribution list as we receive their information.

Child Related Product Recalls

DSS Regulation 114-507C(2) states that furniture, toys, and recreational equipment shall meet the standards of the US Consumer Products Safety Commission (CPSC), if applicable, and that recalled products shall not be accessible to children. To view recalled products and/or report a dangerous product or related injury, call CPSC's hotline at 800-638-2772 or visit their website at www.cpsc.gov.



In addition to the recalls described on page 1 of this newsletter, other recent recalls include:

- Dorel Juvenile Group Recalls Play Yards with Bassinets Due to Suffocation Hazard
- IKEA Recalls LEOPARD Highchairs Due to Fall and Choking Hazards
- Dorel Juvenile Group Recalls Infant Car Seat/Carriers Due to Fall Hazard
- Children's Hooded Sweatshirts with Drawstrings Recalled by Jason Evans Associates Due to Strangulation Hazard; Sold Exclusively at Burlington Coat Factory
- Timberland Recalls Children's Boots Due to Violation of Lead Paint Standard
- Children's Pajama Sets Recalled by Little Miss Matched Due to Violation of Federal Flammability Standard
- Children's Plush Books Recalled by Simon & Schuster Due to Choking Hazard
- Infant Suffocation Deaths Prompt Recall of Amby Baby Motion Beds/Hammocks
- Children's Hooded Sweatshirts with Drawstrings Recalled by NTD Apparel Due to Strangulation Hazard
- Children's Hooded Sweatshirts with Drawstrings Recalled by Sunations Due to Strangulation Hazard
- CPSC, Lajobi Reannounce 2001 Recall of Cribs Due to Entrapment and Strangulation Hazards
- Children's Hooded Sweatshirts with Drawstrings Recalled by Allura Imports Due to Strangulation Hazard

Licensing Contact Information

Region 1

Abbeville, Anderson, Cherokee, Greenville, Greenwood, Laurens, Newberry, Oconee, Pickens, and Spartanburg Counties

864-370-2318

800-637-8550 (toll-free)

864-241-1099 (fax)

Region 2

Aiken, Bamberg, Barnwell, Chester, Edgefield, Fairfield, Kershaw, Lancaster, Lexington, McCormick, Richland, Saluda, Union, and York Counties

803-898-9001

888-202-1469 (toll-free)

803-898-9002 (fax)

Region 3

Allendale, Beaufort, Berkeley, Calhoun, Charleston, Colleton, Dorchester, Hampton, Jasper, and Orangeburg Counties

843-953-9780

800-260-0211 (toll-free)

843-953-9787 (fax)

Region 4

Chesterfield, Clarendon, Darlington, Dillon, Florence, Georgetown, Horry, Lee, Marion, Marlboro, Sumter, and Williamsburg Counties

843-661-6623

800-464-9138 (toll-free)

843-661-7504 (fax)

Central Office:

2638 Two Notch Road, Suite 200
Columbia, SC 29204

803-898-9020

800-556-7445 (toll-free)

803-898-9029 (fax)

Visit our website at:

www.state.sc.us/dss/childcare



DSS
Serving Children and Families

